



DAYLIGHTING THE MOSELLE BROOK THROUGH WOOD GREEN

PMRA working with Thames21

THE VIEWS HERE ARE THOSE OF A COMMUNITY COLLABORATION BROUGHT TOGETHER BY THAMES21

MOSELLE BROOK – A NEW RIVERSIDE

Quick & simple to deliver

- EIA 2017 scoping identifies opportunity
- New Heartlands application delivers 'Blue Ribbon'
- Half of the route can be deculverted
- The ribbon could be completed as far as Mayes Road via Iceland



DOING LESS NOW IS NOT CHEAPER THAN RESTORING THE RIVER



- Financial liability - freeholders & management
- Community unaware of its environmental responsibility for water and rivers
- River will still be treated like a drain
- Pollution continues in Lordship Rec
- The missed opportunity to raise environmental awareness will need procuring in other ways
- The environmental and public health benefits of the open river will have to be purchased elsewhere



MOSELLE BROOK - KEY ISSUES



Site Conditions

- Remediation completed 2017
- Culvert now higher than ground levels in some places
- Site hydrology now better understood
- Daylighting resolves long term maintenance liabilities
- Reduced ground levels provide opportunity to contour river corridor



MOSELLE BROOK - KEY ISSUES

Depth of Channel

- Ground levels have been lowered in the decontamination processes to 2m or less
- No buildings are within 8m of the river on either side
- Critical to include access to the restored river for people to enjoy and care about the our rivers
- Redevelopment is the opportunity



MOSELLE BROOK - KEY ISSUES

Water Quality

- Pollution will soon be a thing of the past
- Most is from misconnected properties
- Council and Thames Water are working together - 85% of misconnections resolved in the past 2 years
- Commitment to 'sign off' river by 2019 – Thames Water



<u>Total miscon properties</u>	<u>Miscon Rectified</u>	<u>Miscon with LA</u>	<u>Property Count</u>	<u>Local Authority</u>
77	48	29	11562	Haringey



MOSELLE BROOK - KEY ISSUES

Flood Risk

- Daylighting increases storage for flood water preventing flooding downstream

Sufficient space

- Redevelopment plans and the Blue Ribbon have provided to contour

Opportunity and viability

- The opportunity, knowledge and resources exist now



Policy

- Environment Agency
- The London Plan – Blue Ribbon
- Haringey Council Policy SD5
- Thames 21

Feasibility

- Policy requires feasibility to be established
- Daylighting the Moselle Brook is feasible and should be investigated



PMRA is bringing together:

- The local community
- Community interest groups
- Councillors and planners
- Regulatory bodies
- Developers and landowners
- River restoration specialists
- Potential partners and funding streams

In a positive conversation to achieve the vision



The Moselle Brook

Lost for over a hundred years yet never forgotten. Join us in a celebration of one of Haringey's heritage assets and hear about our campaign to restore it in Wood Green.

Monday 19th June 2017
6.00 - 7.30 pm

Guest presentation by John Bryden - Senior Programme Manager, Thames 21

Contributions from Joyce Rosser (Sustainable Haringey), David Dell & Albert Pinchling (Hornsey Historical Society) - authors of Haringey's Hidden Streams Revealed
Marcus Ballard (Co-chair, PMRA)

Haringey Council, St William and local landowners invited.

venue
Big Green Bookshop,
1 Brampton Park Road, N22 6BG

All welcome

Organised by PMRA with support from Sustainable Haringey and Big Green Bookshop.
Sustainable Haringey <http://sustainable-haringey.wikispaces.com/> 020 8347 7684.



RESTORING THE MOSELLE IS FEASIBLE



- River restoration and housing go together
- No new Haringey financial/ reputational exposure
- The catchment upstream is limited, defined and will be clean by 2019
- Safeguard water quality from 2019 by engaging the community to accept its environmental responsibilities
- Haringey already has the responsibility for pollution events in Lordship Rec: a clean river through Heartlands means Lordship Rec stays clean



WHAT NEXT

- Meeting with Head of Planning
- Development Forum June 2017
- Role of RBLG
- New planning applications for Heartlands and Iceland
- AAP
- Community Champions
- Resources and funding



IT CAN BE DONE – COMMUNITY

- Demographically, the upstream community is educated, economically successful, environmentally aware and aspire to being environmentally responsible (supporting lower carbon emissions, sustainable transport, recycling, air quality, public health and wellbeing, removing health inequalities, green spaces)



IT CAN BE DONE - PARTNERSHIP

- If the harm caused by illegal future misconnections is properly communicated to them and they realise that it is their neighbours that are suffering, they will act. The future lies in community responsibility, communication and partnership.

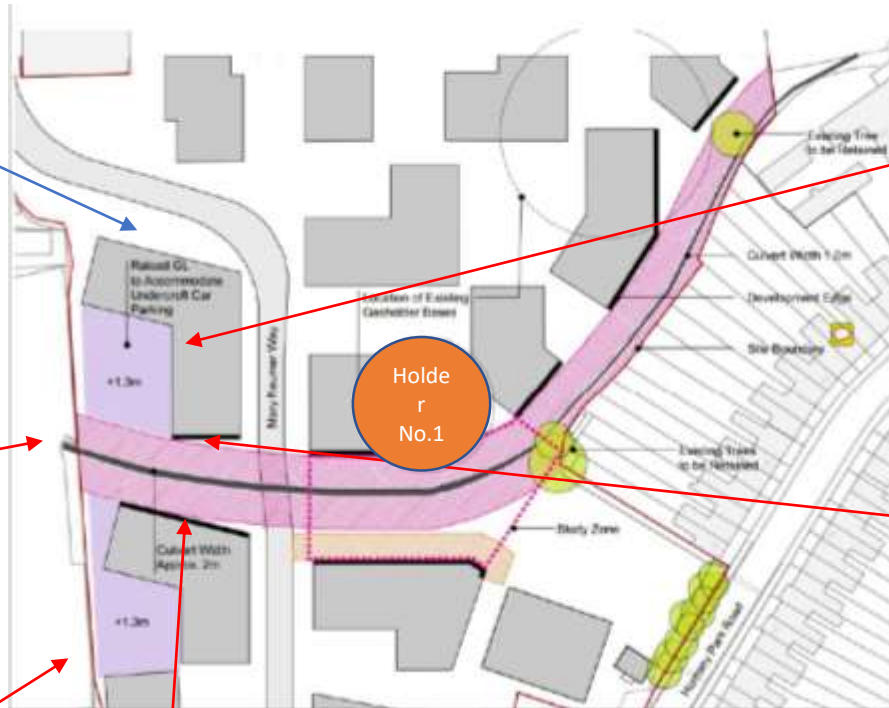


ADDITIONAL SLIDES

- VIEWS OF THE SITE - 2017



VIEWS OF THE SITE - CONTEXT



Course of Moselle culvert shown thus



Plan from Atkins report showing line of Moselle culvert and excavations following site remediation, May 2017

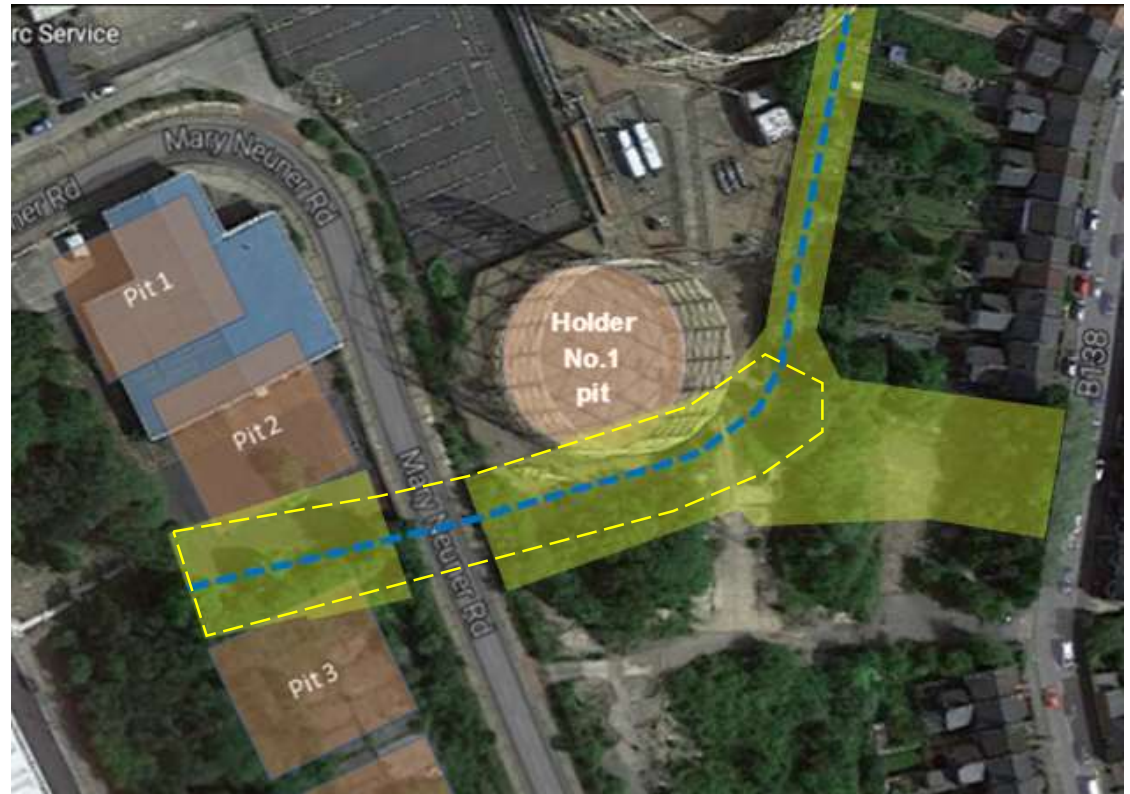
VIEWS OF THE SITE – PROPOSED OPEN SPACE



Cover to Moselle culvert from Pit 2



Cover to Moselle culvert from Pit 3



Course of Moselle Brook relative to reduced levels (Pits 1 to 3) and Holder No.1 base pit and area of pocket park (Opportunity to contour shown in yellow broken line)